

139-59
510-19

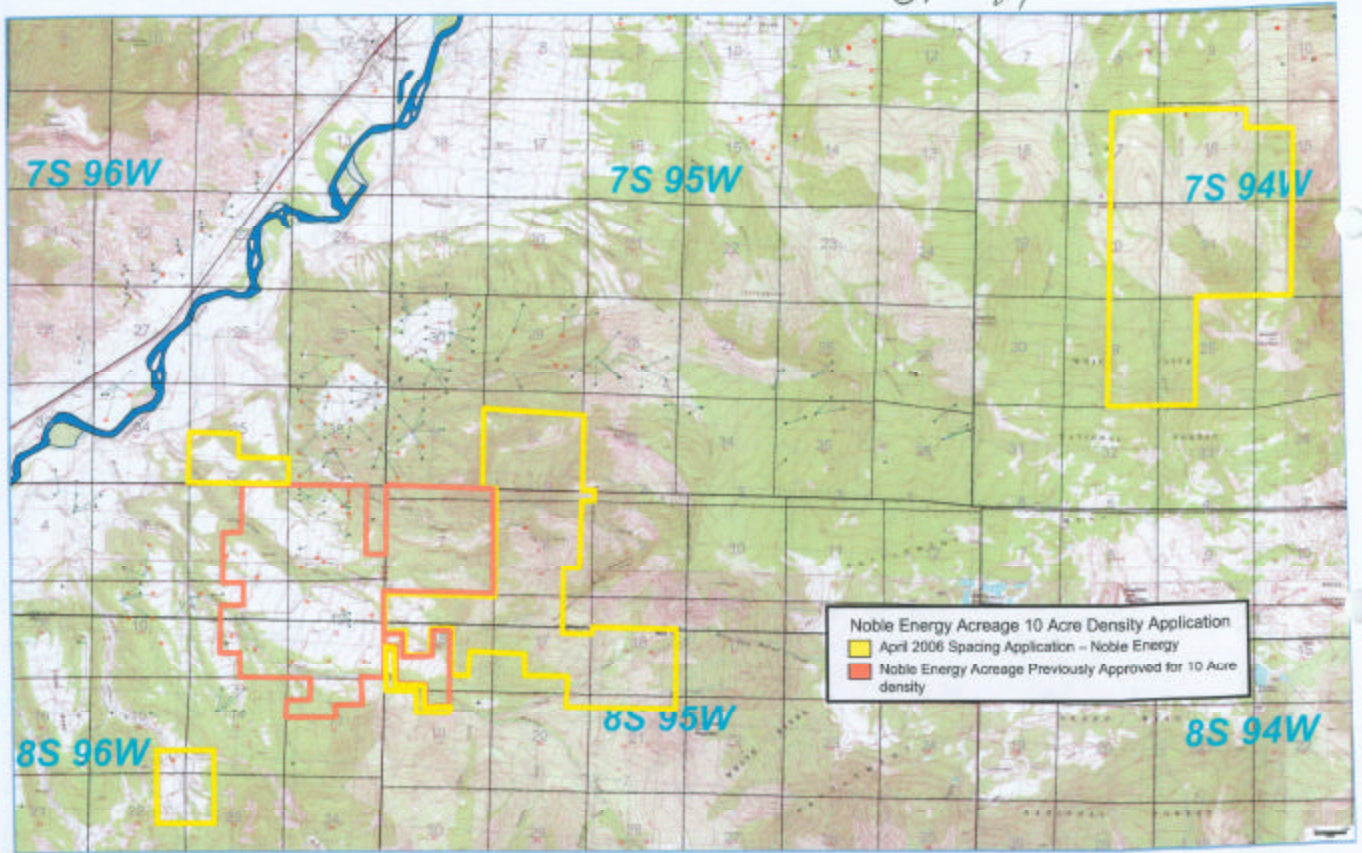


EXHIBIT A-1
Cause No. 139 & 510
Docket No. 0604-SP-18
Mesa and Garfield Counties/
Rulison Field
Noble 10-acre Density Application

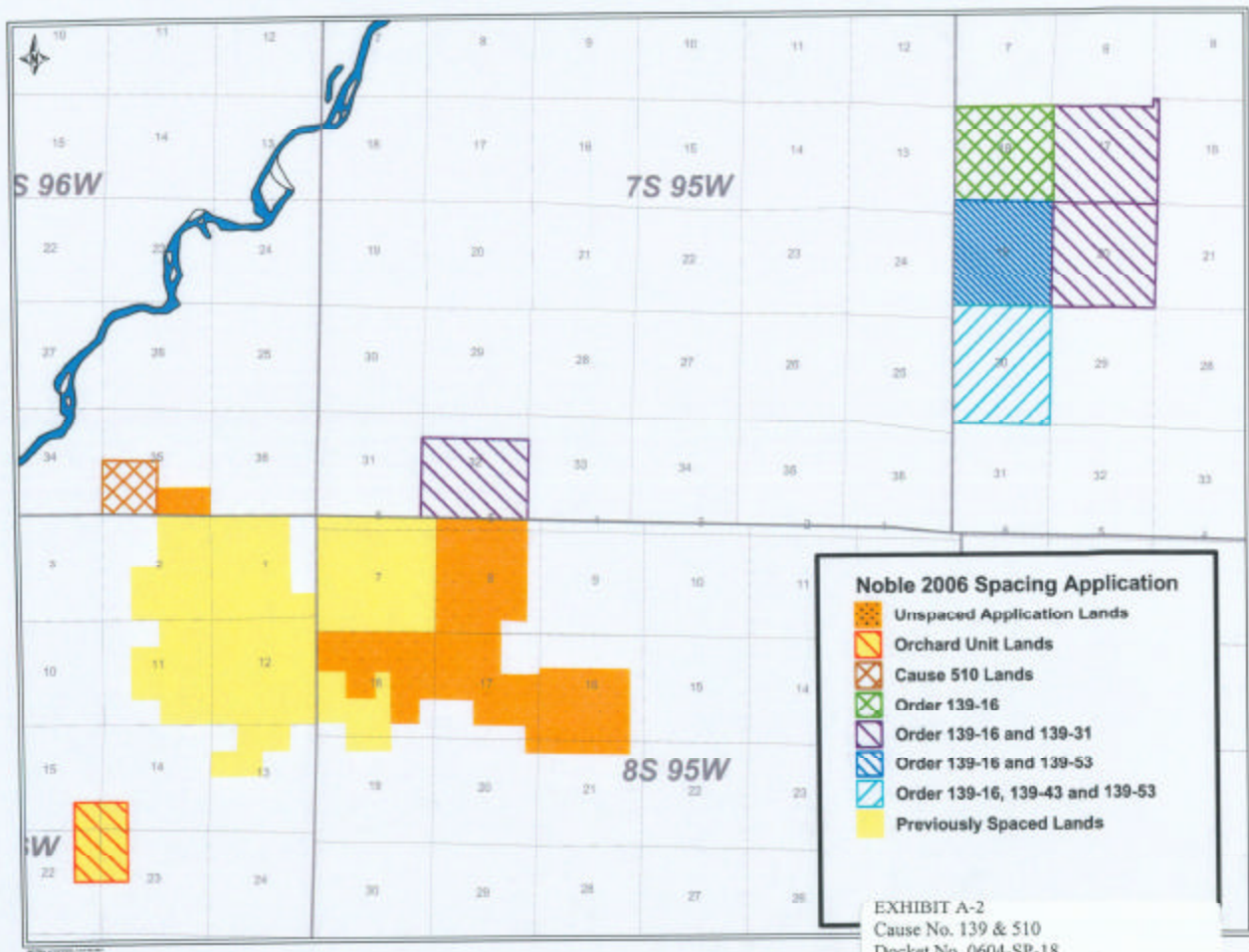


EXHIBIT A-2
Cause No. 139 & 510
Docket No. 0604-SP-18
Mesa and Garfield Counties/
Rulison Field
Noble 2006 Spacing Application Map

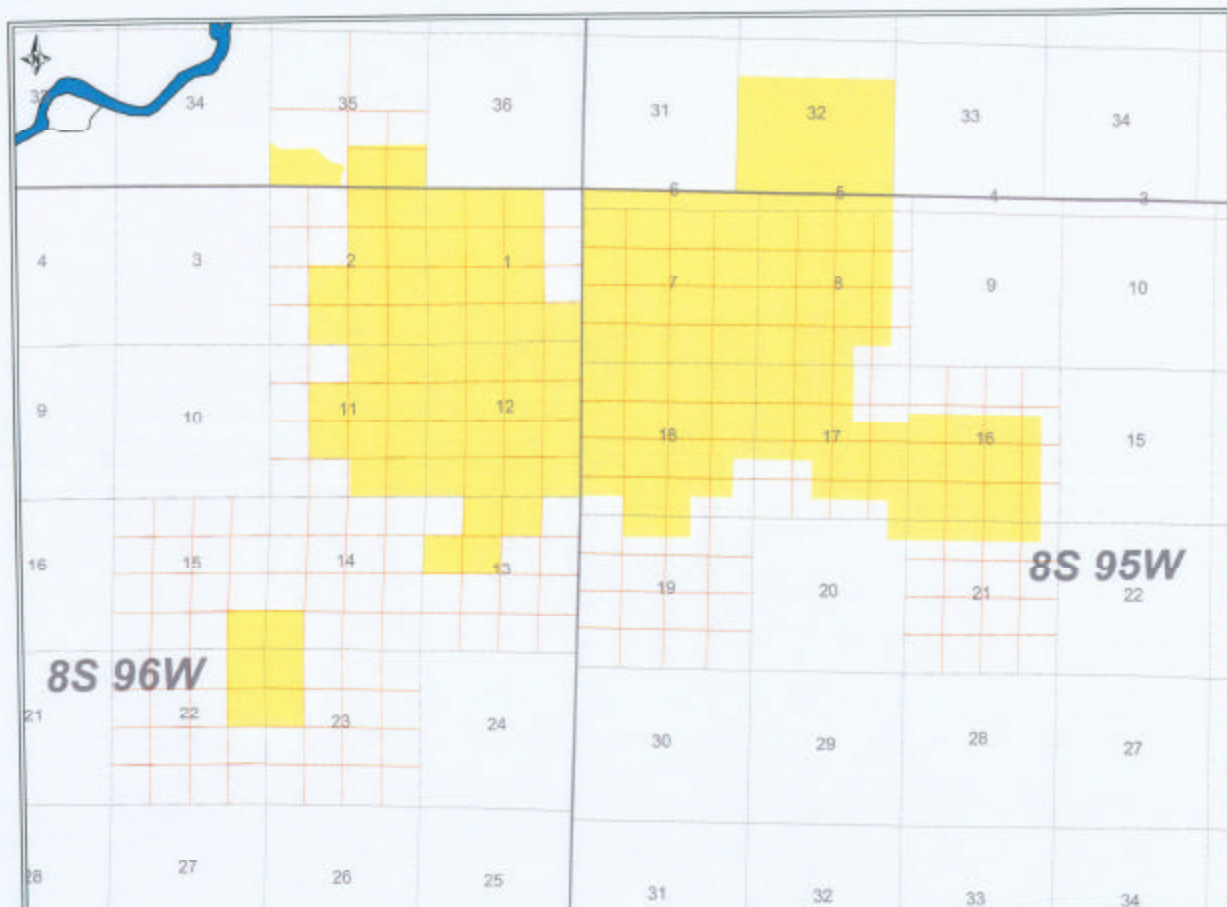


EXHIBIT A-3
Cause No. 139 & 510
Docket No. 0604-SP-18
Mesa and Garfield Counties/
Rulison Field
40-acre Spacing Map

8S-96W

15

14

600'

200'

22

23

EXHIBIT A-4
Cause No. 139 & 510
Docket No. 0604-SP-18
Mesa and Garfield Counties/
Rulison Field
Orchard Unit Map

0 1063
FEET

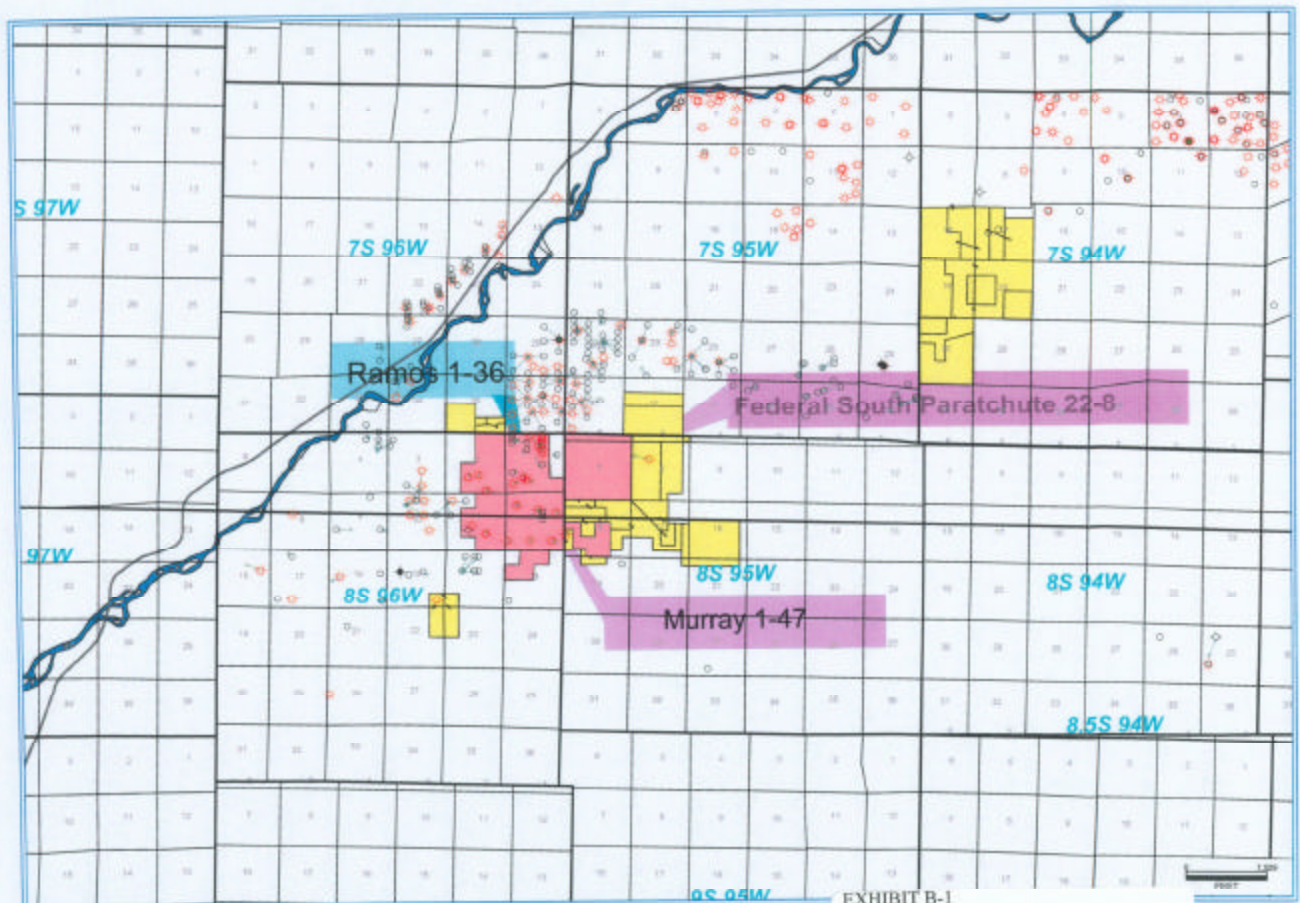


EXHIBIT B-1
Cause No. 139 & 510
Docket No. 0604-SP-18
Mesa and Garfield Counties/
Rulison Field
Noble Energy Well Map

TYPE LOG SECTION - WILLIAMS FORK FM

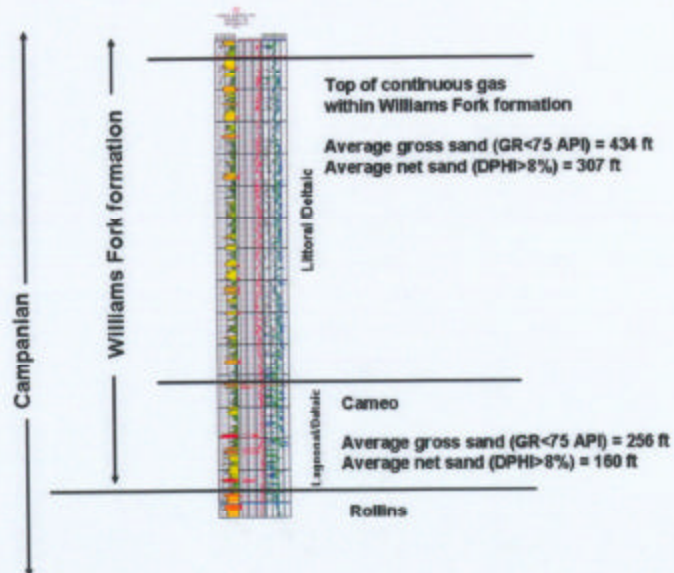


EXHIBIT B-2
Cause No. 139 & 510
Docket No. 0604-SP-18
Mesa and Garfield Counties/
Rulison Field
Ramos Detail Log - Williams Fork

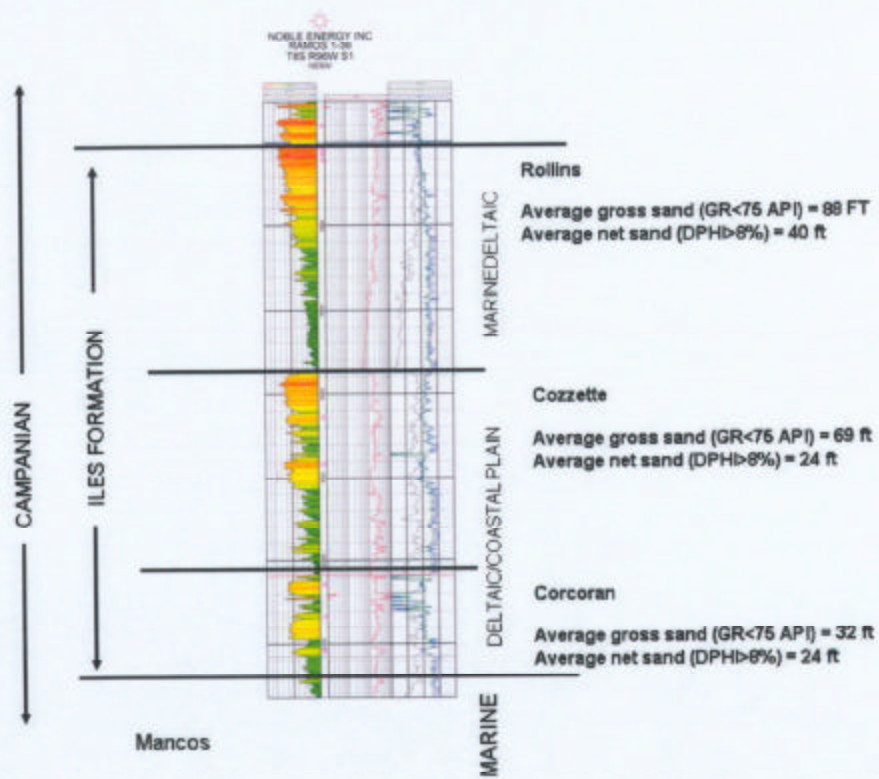


EXHIBIT B-3
Cause No. 139 & 510
Docket No. 0604-SP-18
Mesa and Garfield Counties/
Rulison Field
Ramos Detail Log - Iles

Type Log for the Mesaverde Group South
Grand Valley Area
Garfield and Mesa Counties

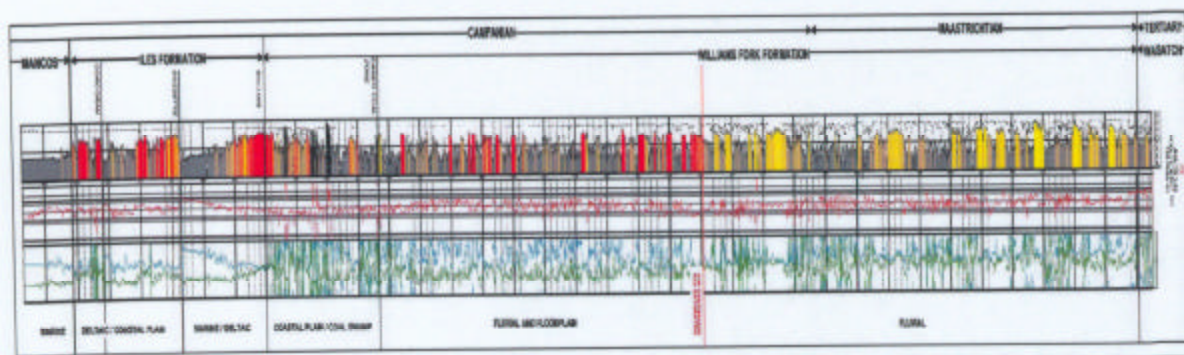


EXHIBIT B-4
Cause No. 139 & 510
Docket No. 0604-SP-18
Mesa and Garfield Counties/
Rulison Field
Type Log for the Mesaverde Group

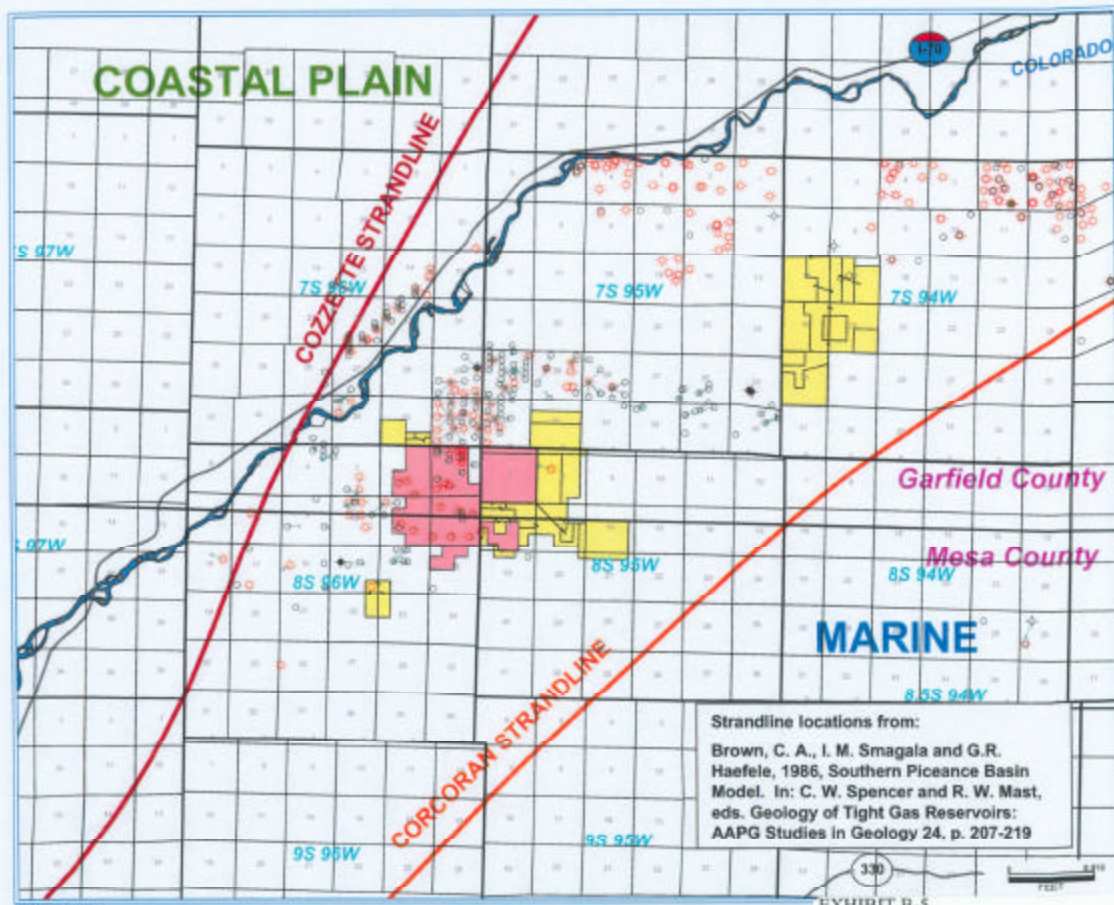
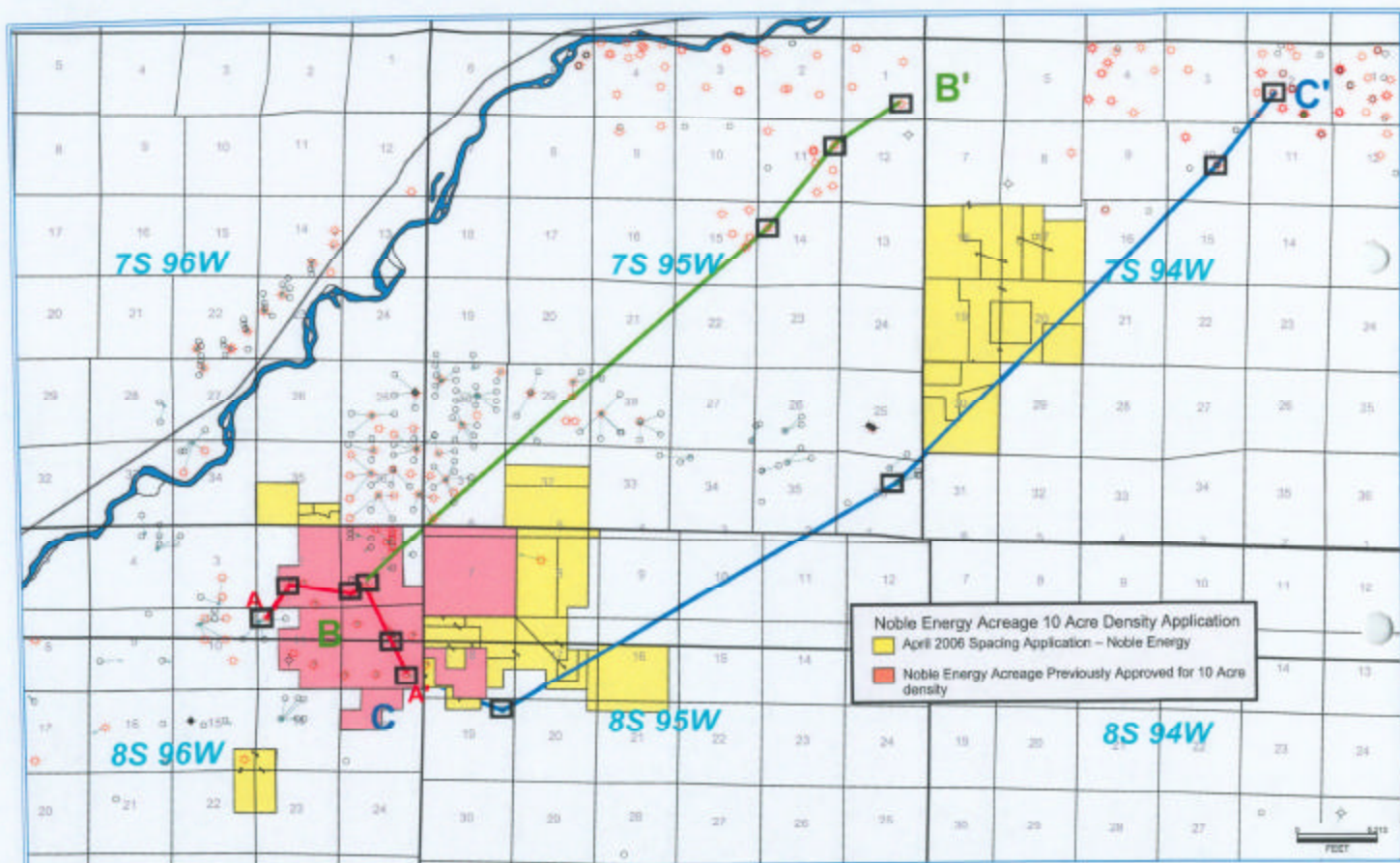


EXHIBIT B-5
 Cause No. 139 & 510
 Docket No. 0604-SP-18
 Mesa and Garfield Counties/
 Rulison Field
 Strandline Location Map



A

A'

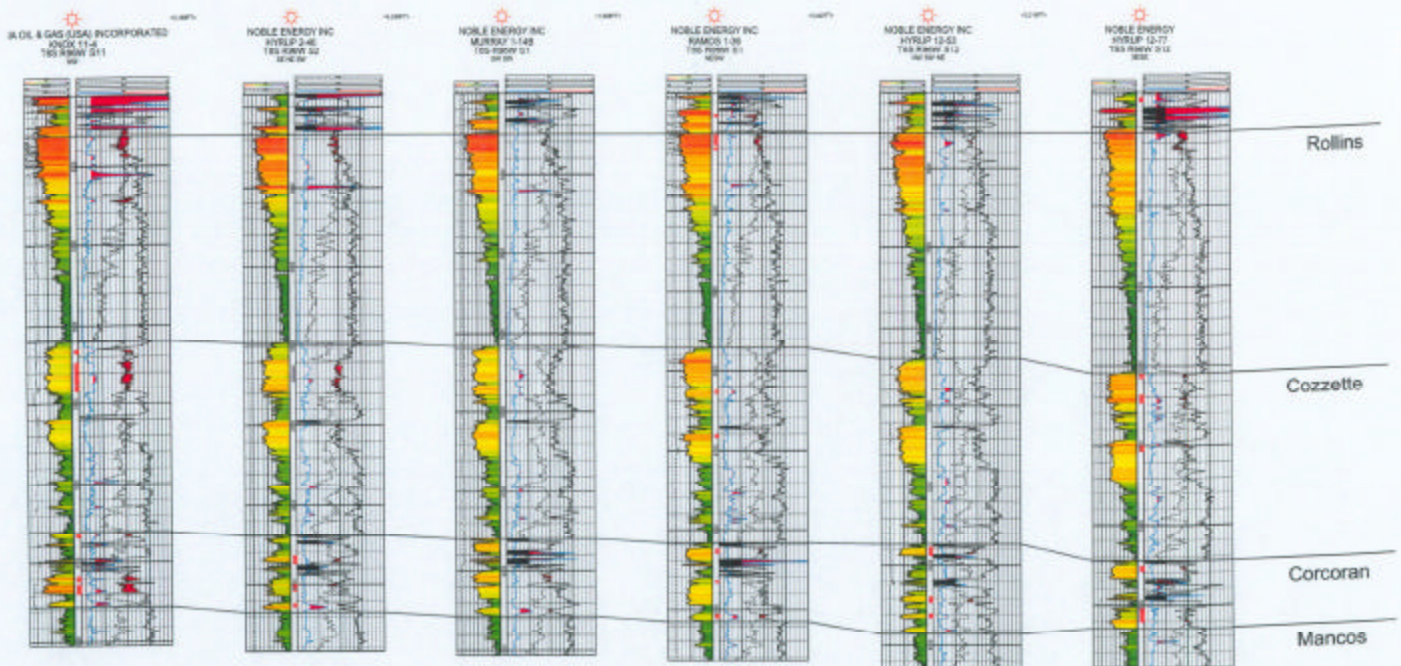
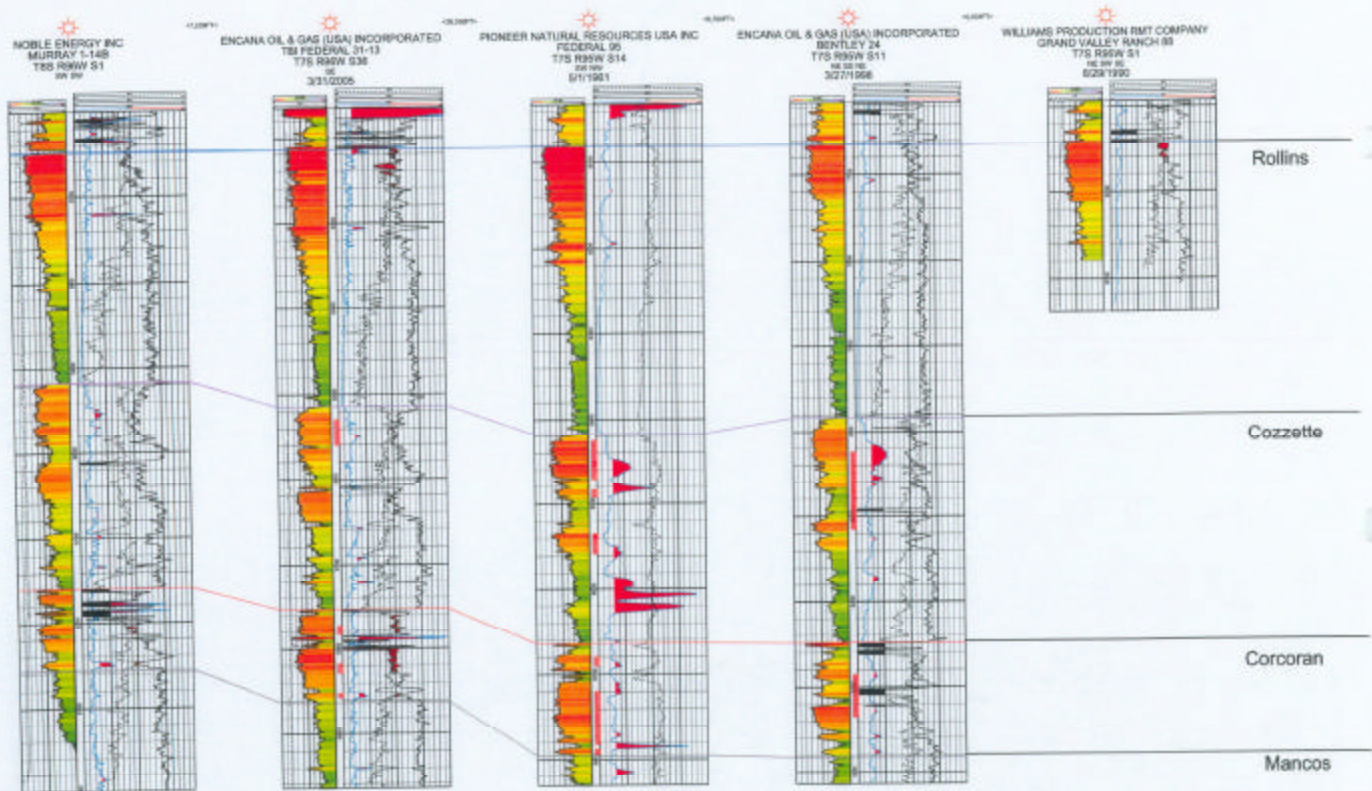


EXHIBIT B-7
Cause No. 139 & 510
Docket No. 0604-SP-18
Mesa and Garfield Counties/
Rulison Field
Well Logs

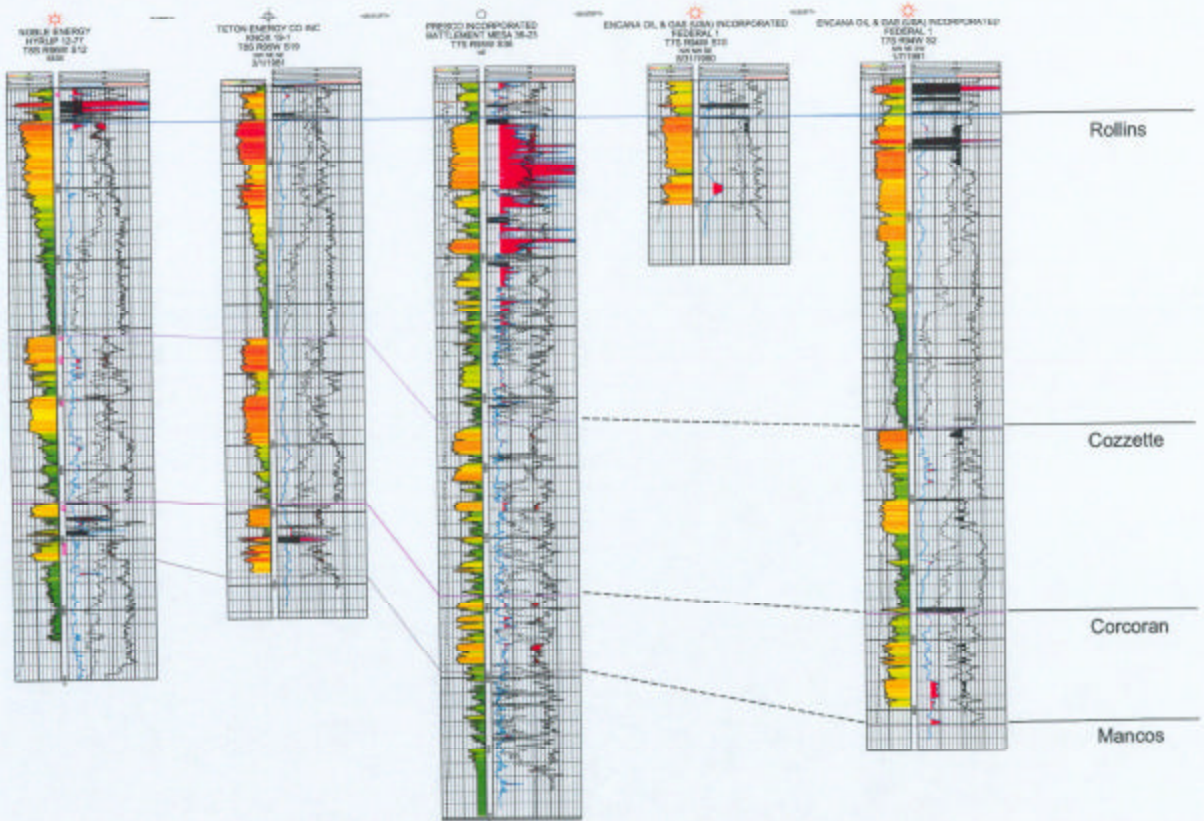
B

B'

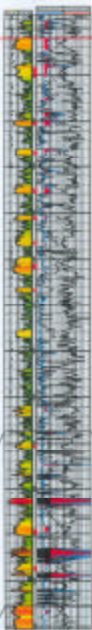
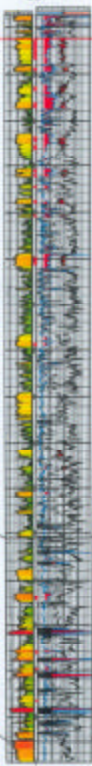
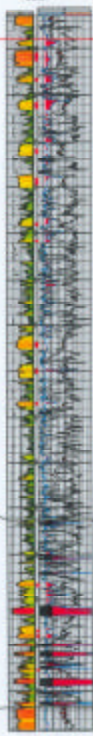


C

C'



Volume 24, 4th Quarter, December 2010
 ISSN 0013-790X
 The Journal of Law, Economics, & Organization, Vol. 24, No. 4, December 2010

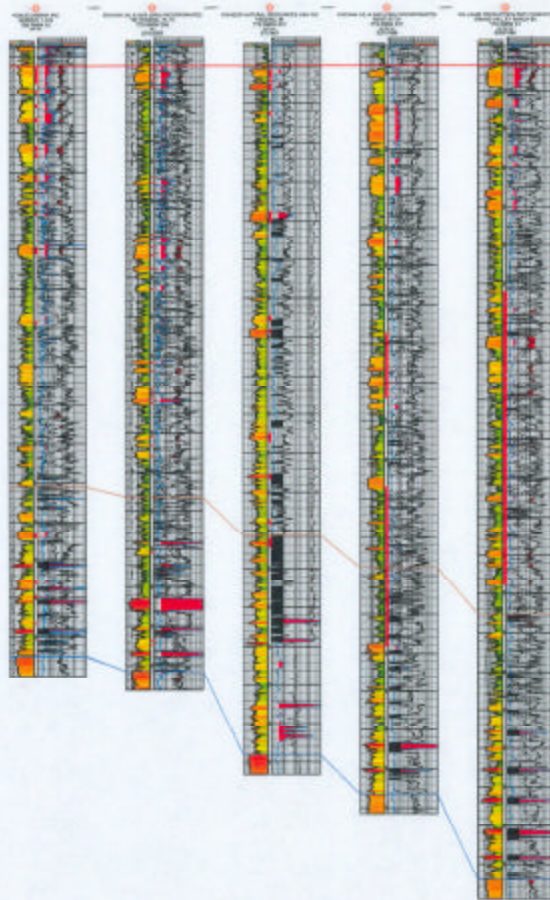


Top of continuous gas
Williams Fork fm

Cameo

Rollins

B



B'

Top of continuous gas
Williams Fork fm

Cameo

Rollins

C



C'

Top of continuous gas
Williams Fork fm

Cameo

Rollins