

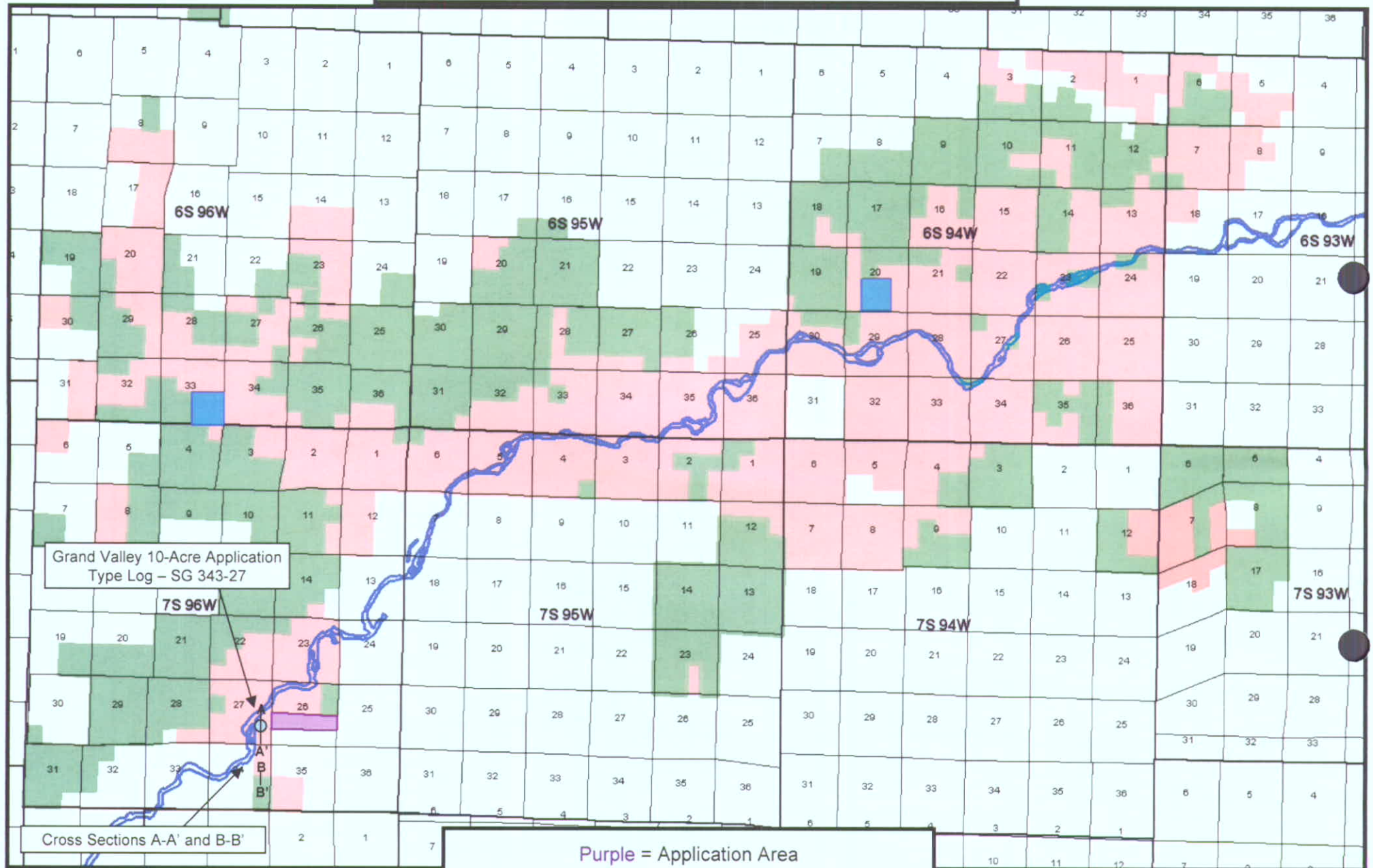
PETRA 5/9/2007 3:48:01 PM

RECEIVED
 AUG - 9 07
 COGCC

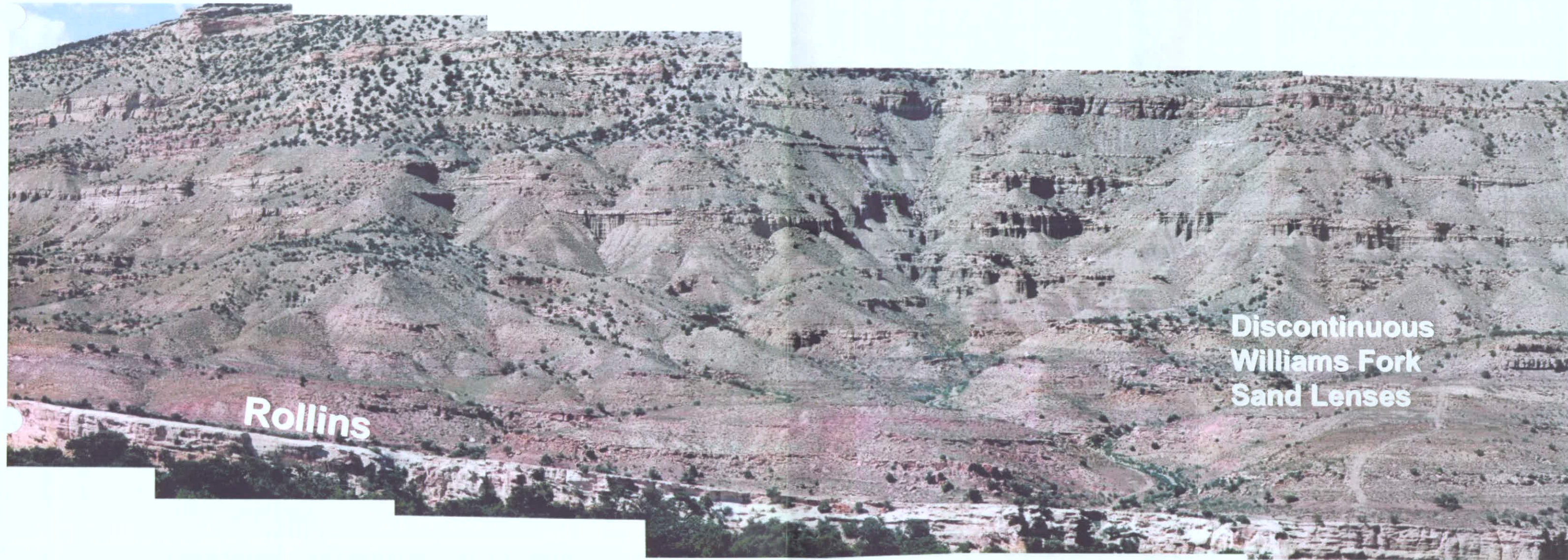


#510-37

10-acre Density Application Lands



Mesaverde Outcrop, Coal Canyon Near Cameo, Colorado



- Approximately 24 miles southwest of Grand Valley Field, very similar lower Williams Fork section to that producing in Grand Valley, Parachute, and Rulison Fields
- Outcrop study of excellent exposures near Cameo, Colorado was undertaken to gather data on sand body extents

Type Log for the Mesaverde Group,
South Grand Valley Field Area, Garfield County, Colorado

SG 343-27
TTS R66W S27
S1/24/2006 S27
ELEV 8,5037
TD 5,100

Tertiary

Wasatch Fm.

Upper Cretaceous

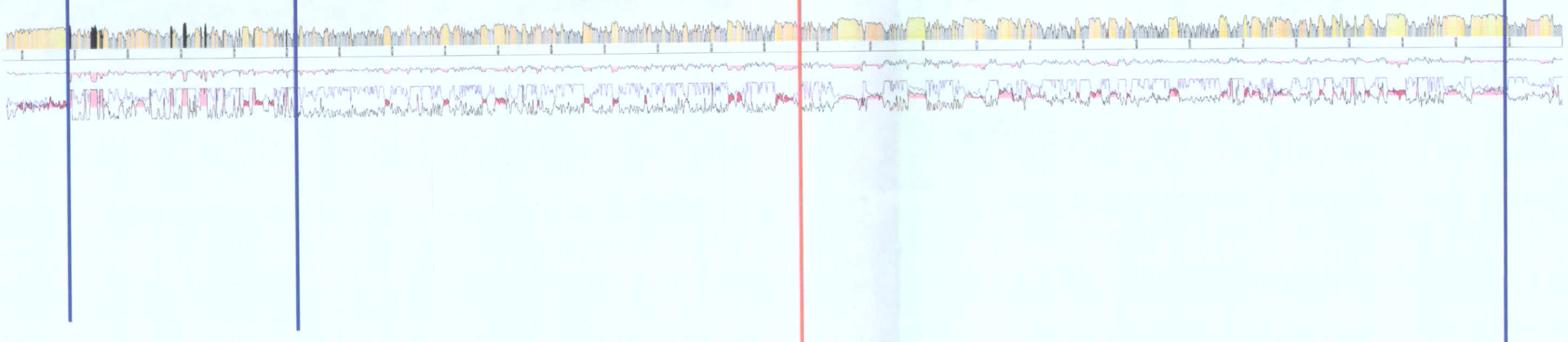
MESAVERDE GROUP

WILLIAMS FORK FORMATION

Top Gas Saturation

CAMEO COALS

ROLLINS MEMBER



A

SG 343-27
T7S R96W S27
5/24/2006
ELEV KB : 5,037
TD : 5,100

306 ft.

SG 443-27
T7S R96W S27
5/31/2006
ELEV KB : 5,036
TD : 5,140

342 ft.

A'

SG 543-27
T7S R96W S27
6/6/2006
ELEV KB : 5,036
TD : 5,241

Williams Fork Formation

Cameo Coal Interval

Top of Gas

Top of Gas

Rollins Sandstone

Rollins Sandstone

B

B'

SG 542-34
T7S R96W S34
12/23/2006
ELEV_KB : 5,077
TD : 4,996

SG 442-34
T7S R96W S34
12/16/2006
ELEV_KB : 5,077
TD : 5,160

SG 342-34
T7S R96W S34
12/8/2006
ELEV_KB : 5,077
TD : 5,146

322 ft.

327 ft.

Top of Gas

Top of Gas

Williams Fork Formation

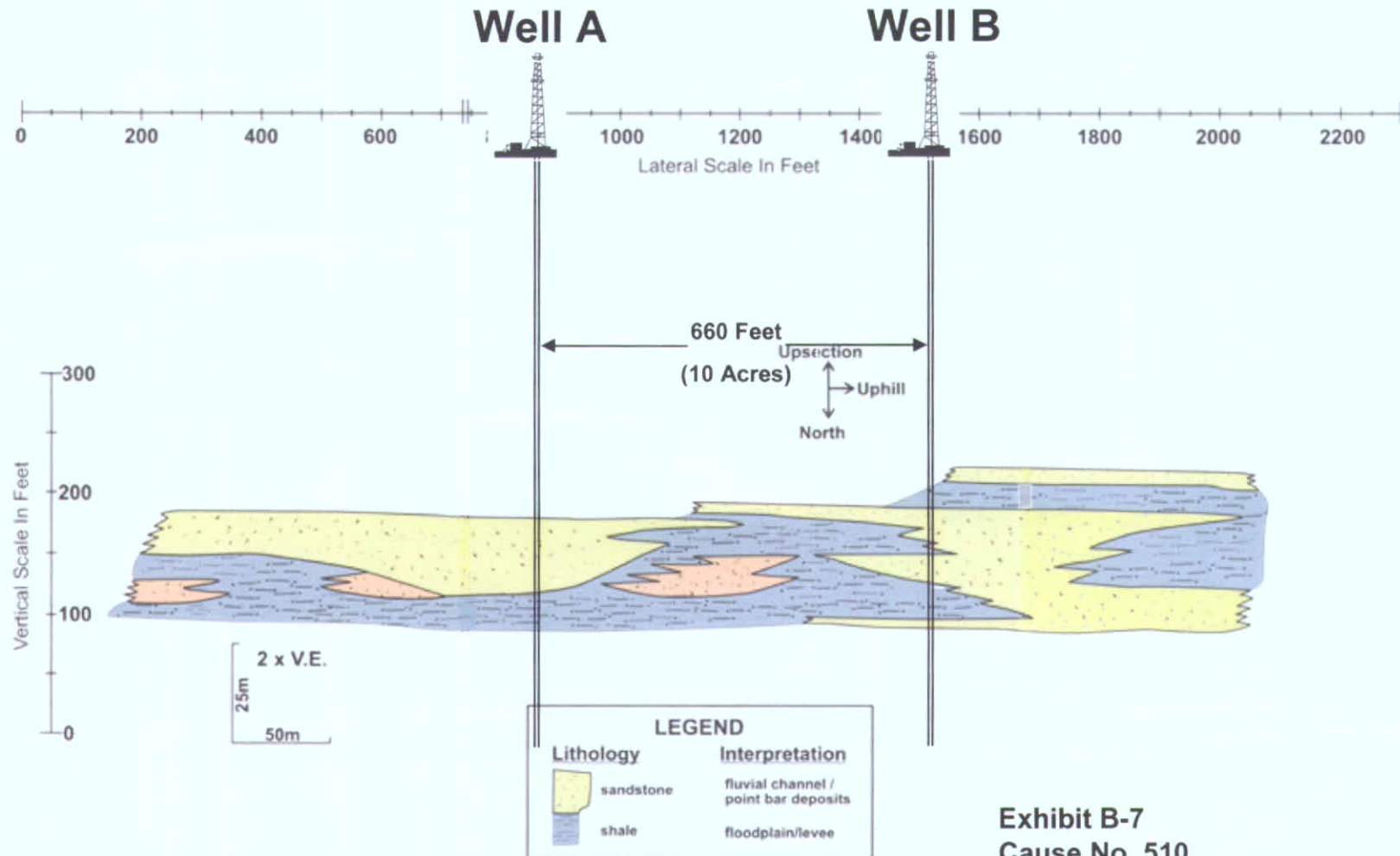
Cameo Coal Interval

Rollins Sandstone

Rollins Sandstone

Williams Fork Sandstone Bodies With Hypothetical 10-Acre Wells

Eastern Margin of Piceance Basin - Mesaverde Outcrop at Rifle Gap (near Rifle, Colorado)



Outcrop of lens 8, west side of Rifle Gap, modified from Lorenz, 1982 (Pg. 28, Fig. 12).

Exhibit B-7
Cause No. 510
Docket No. 0710-SP-26

Williams Fork Sandstone Bodies With Hypothetical 10-acre wells

Western Margin of Piceance Basin - Mesaverde Outcrop in Coal Canyon (near Cameo, Colorado)

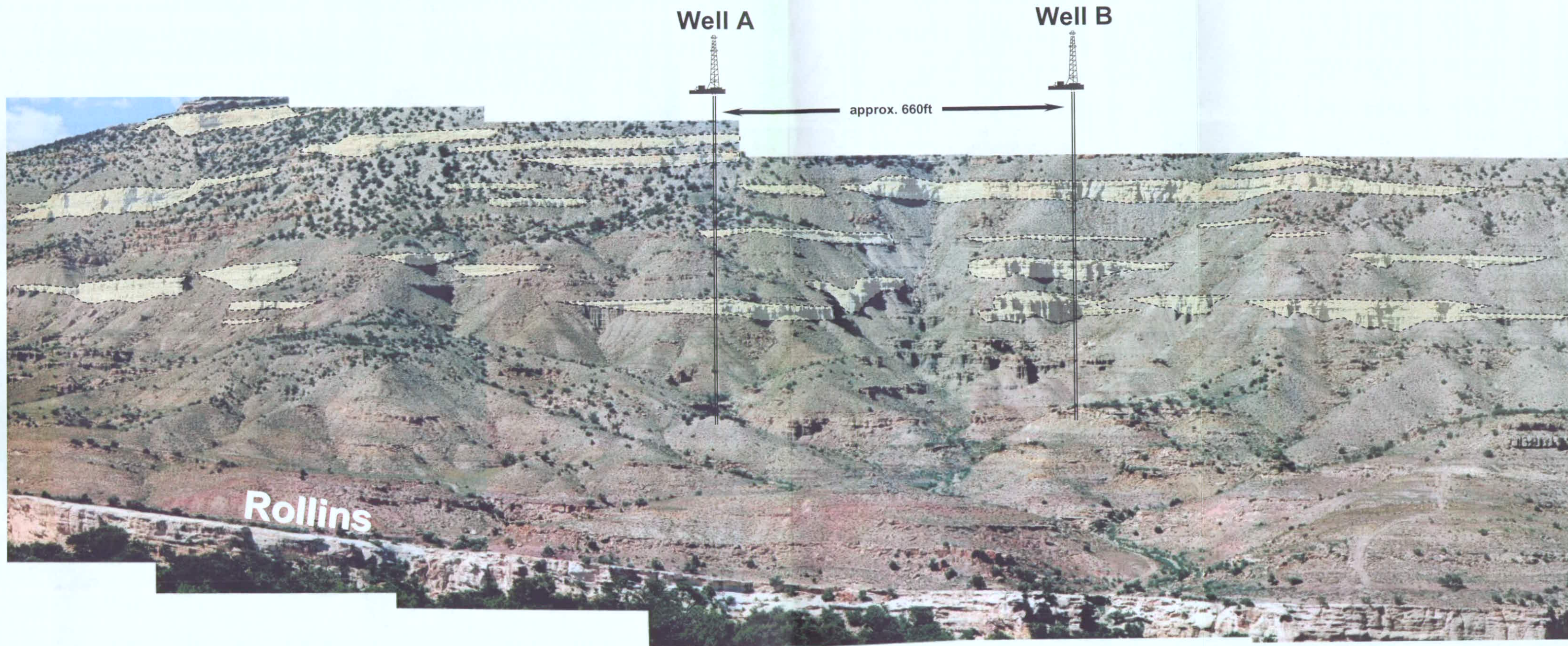
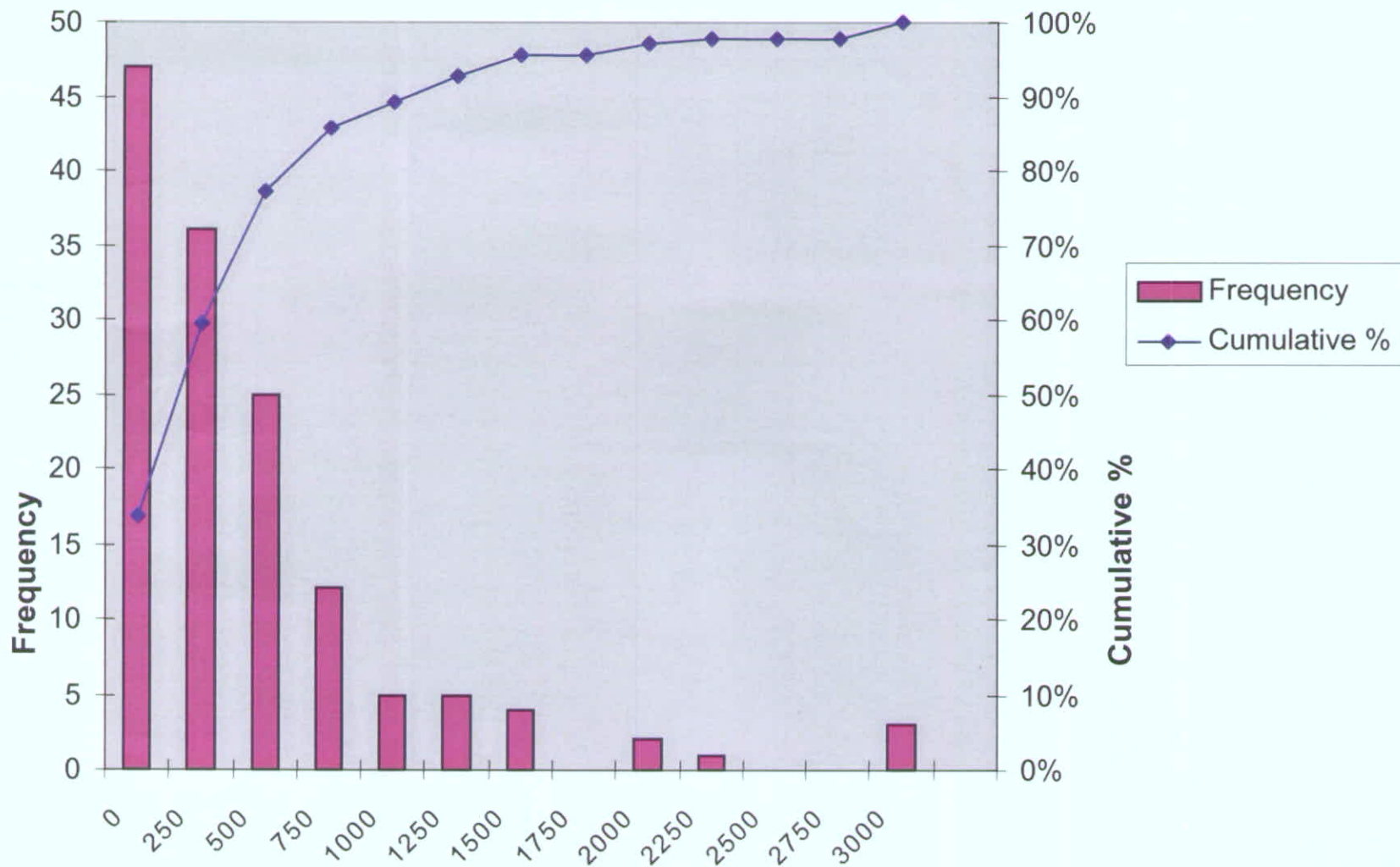


Exhibit B-8
Cause No. 510
Docket No. 0710-SP-26

Williams Fork Outcrop Sand Body Sizes



Average Extents of 137 Sand Bodies=682 ft

**Exhibit B-4
Cause No. 510
Docket No. 0710-SP-26**

Pore Pressure Tests – One Sand Per Frac Stage

RWF 534-20
T6S R94W S20
TD: 7,770' ELEV: KB: 5,355'

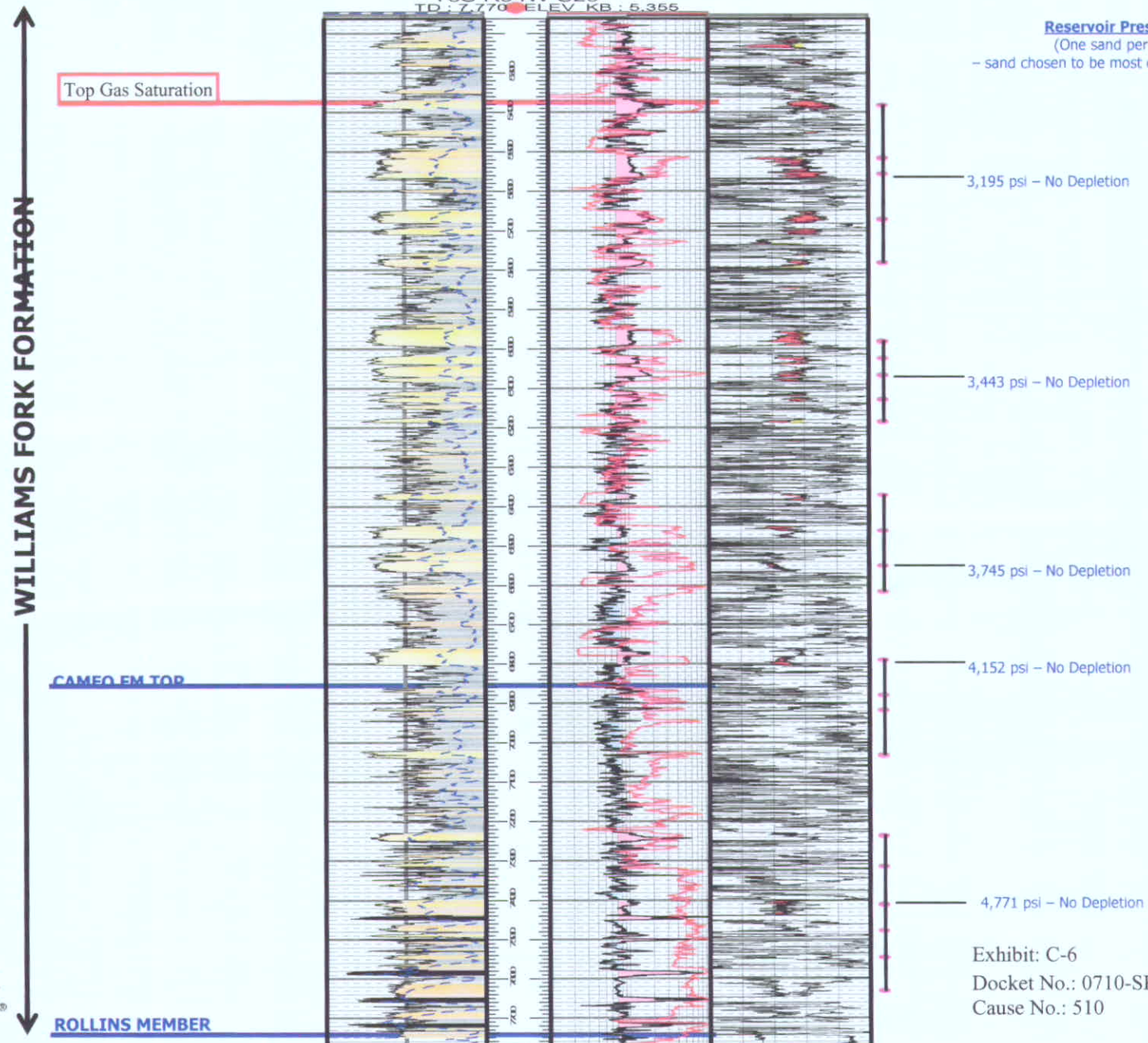


Exhibit: C-6
Docket No.: 0710-SP-26
Cause No.: 510

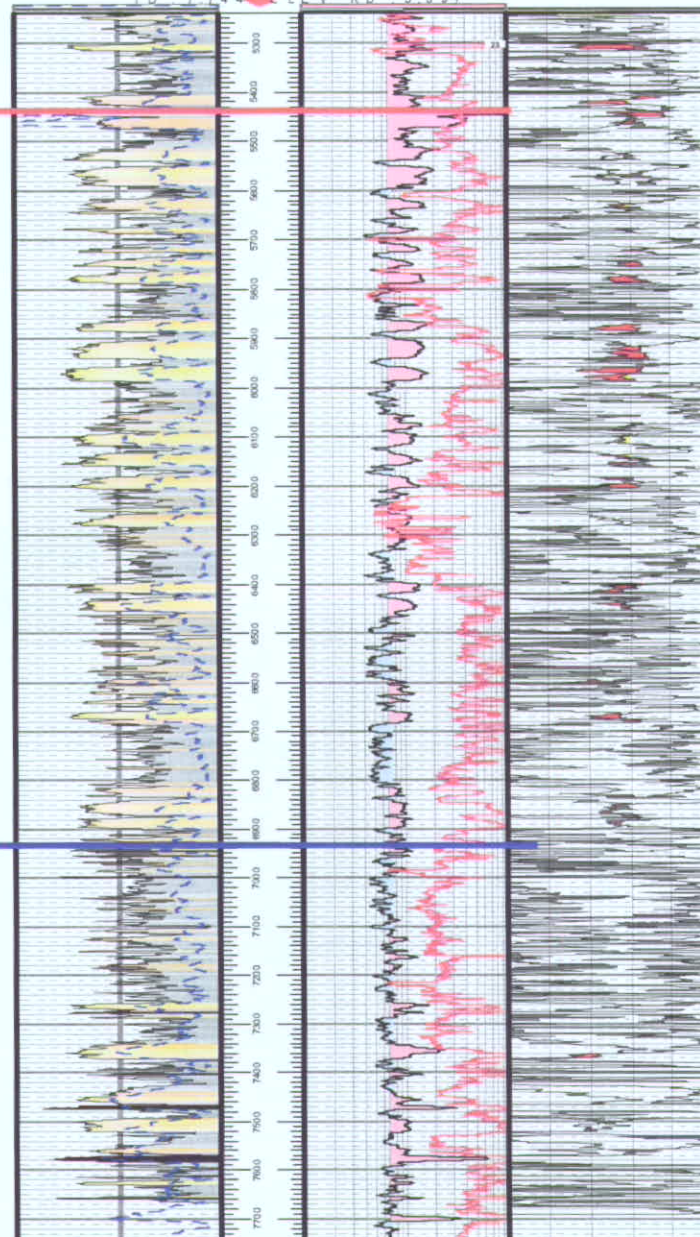
Pore Pressure Tests – All Sands Completed

↑
WILLIAMS FORK FORMATION

R W F 4 3 3 - 2 0
T 6 S R 9 4 W S 2 0
T D 7 7 4 4 F L E V K B 5 3 9 7

Top Gas Saturation

CAMEO FM TOP



Reservoir Pressure Results
(Every sand tested that was completed)

2,516 psi – No Depletion
2,520 psi – No Depletion
2,522 psi – No Depletion
2,580 psi – No Depletion
2,597 psi – No Depletion

3,226 psi – No Depletion
3,297 psi – No Depletion
3,336 psi – No Depletion
2,931 psi – No Depletion
3,428 psi – No Depletion

1,987 psi – Partial Depletion
1,566 psi – Partial Depletion

3,242 psi – No Depletion
3,263 psi – No Depletion

2,793 psi – Partial Depletion

3,232 psi – No Depletion
3,020 psi – No Depletion
3,531 psi – No Depletion
Bad Test
4,104 psi – No Depletion
4,050 psi – No Depletion

4,123 psi – No Depletion
4,141 psi – No Depletion
4,534 psi – No Depletion
4,788 psi – No Depletion

4,813 psi – No Depletion
5,110 psi – No Depletion

5,234 psi – No Depletion
4,905 psi – No Depletion



ROLLINS MEMBER

Exhibit: C-5
Docket No.: 0710-SP-26
Cause No.: 510

**Rulison Field 4-well Example (Sec 27-6S-94W)
10-acre Offsetting Production**

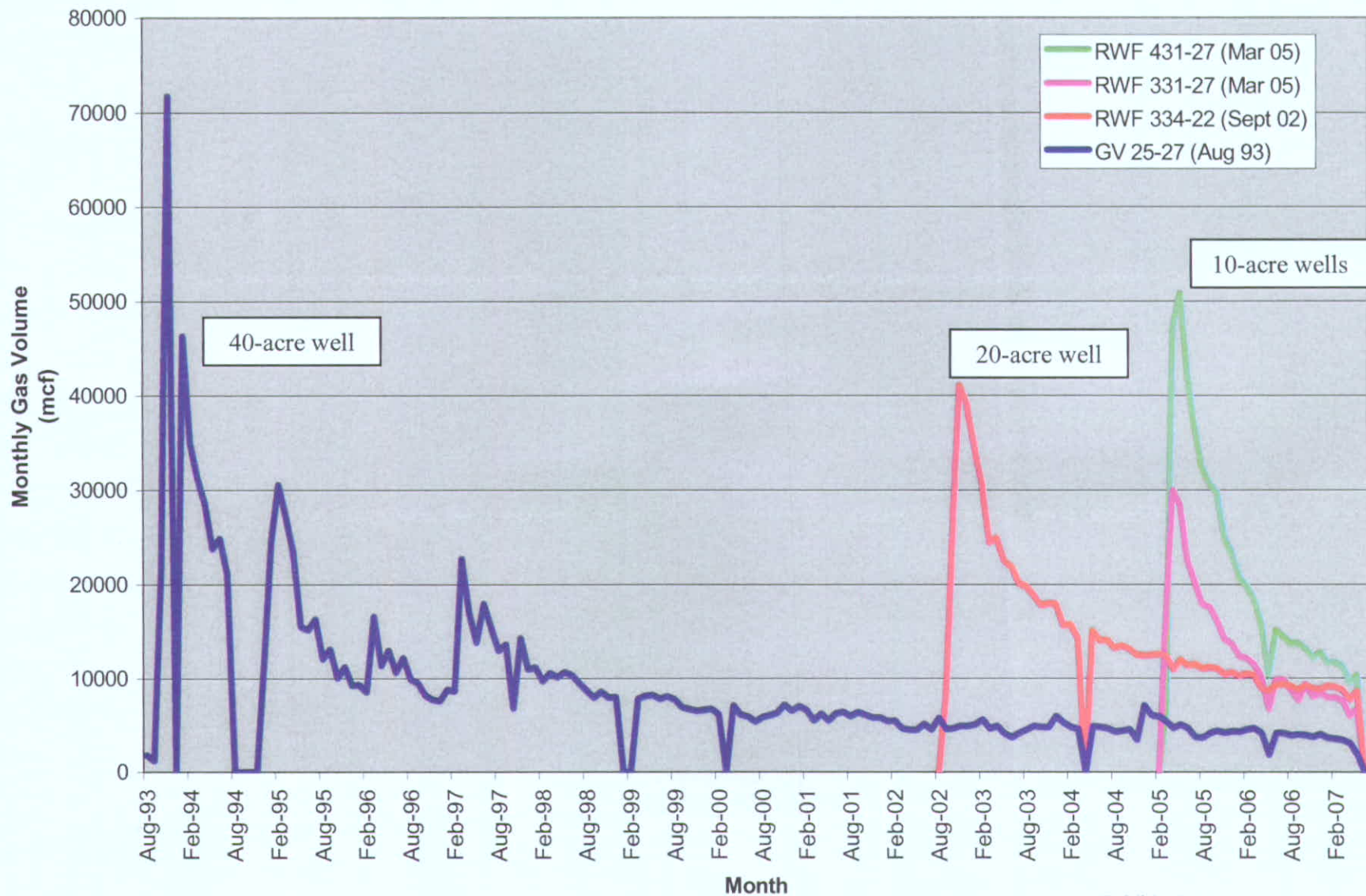


Exhibit: C-10
Docket No.: 0710-SP-26
Cause No.: 510

Grand Valley Field Average Monthly Production Comparison

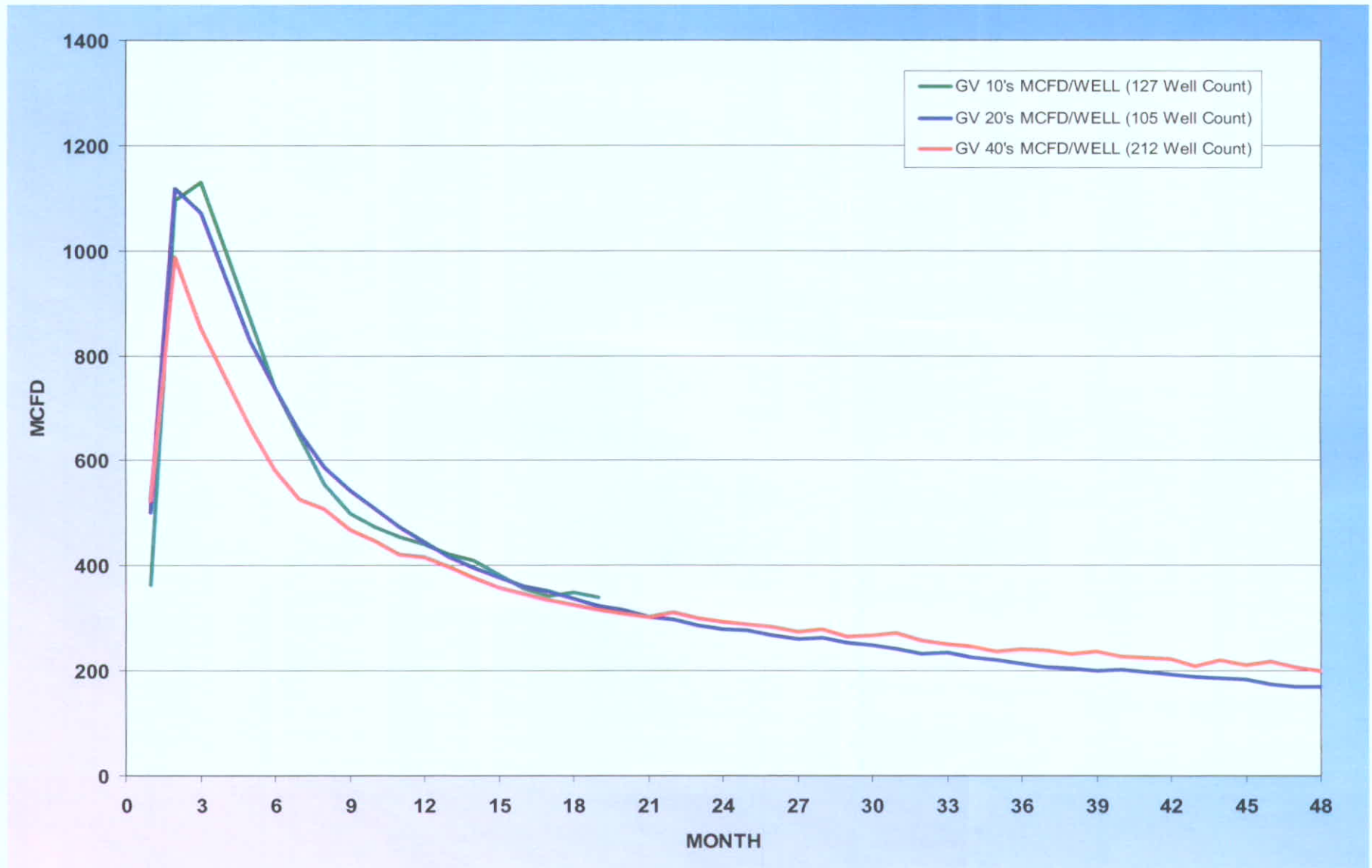


Exhibit: C-11
Docket No.: 0710-SP-26
Cause No.: 510

Parachute Field Average Monthly Production Comparison



Exhibit: C-12

Docket No.: 0710-SP-26

Cause No.: 510

Rulison Field Average Monthly Production Comparison

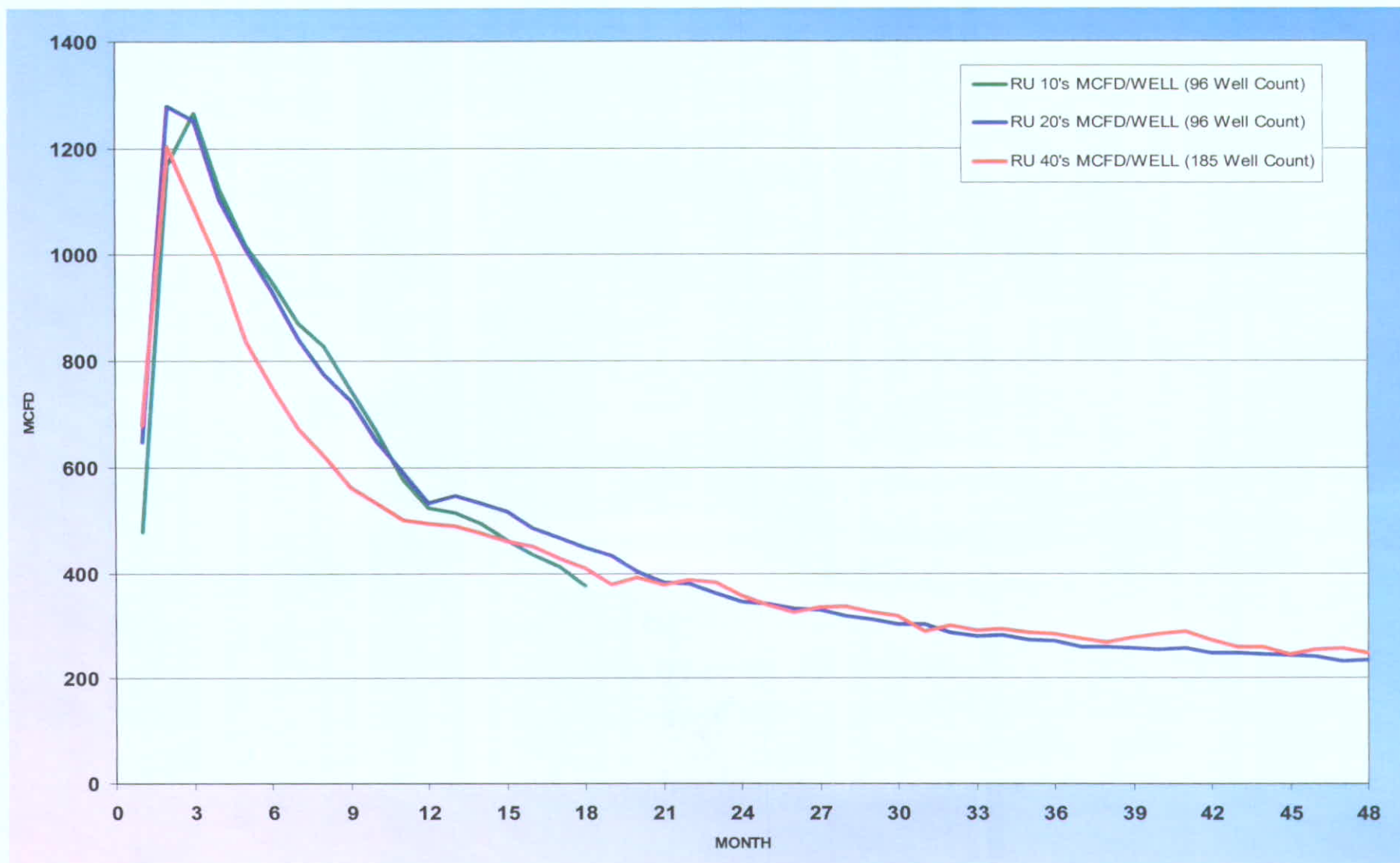


Exhibit: C-13
Docket No.: 0710-SP-26
Cause No.: 510