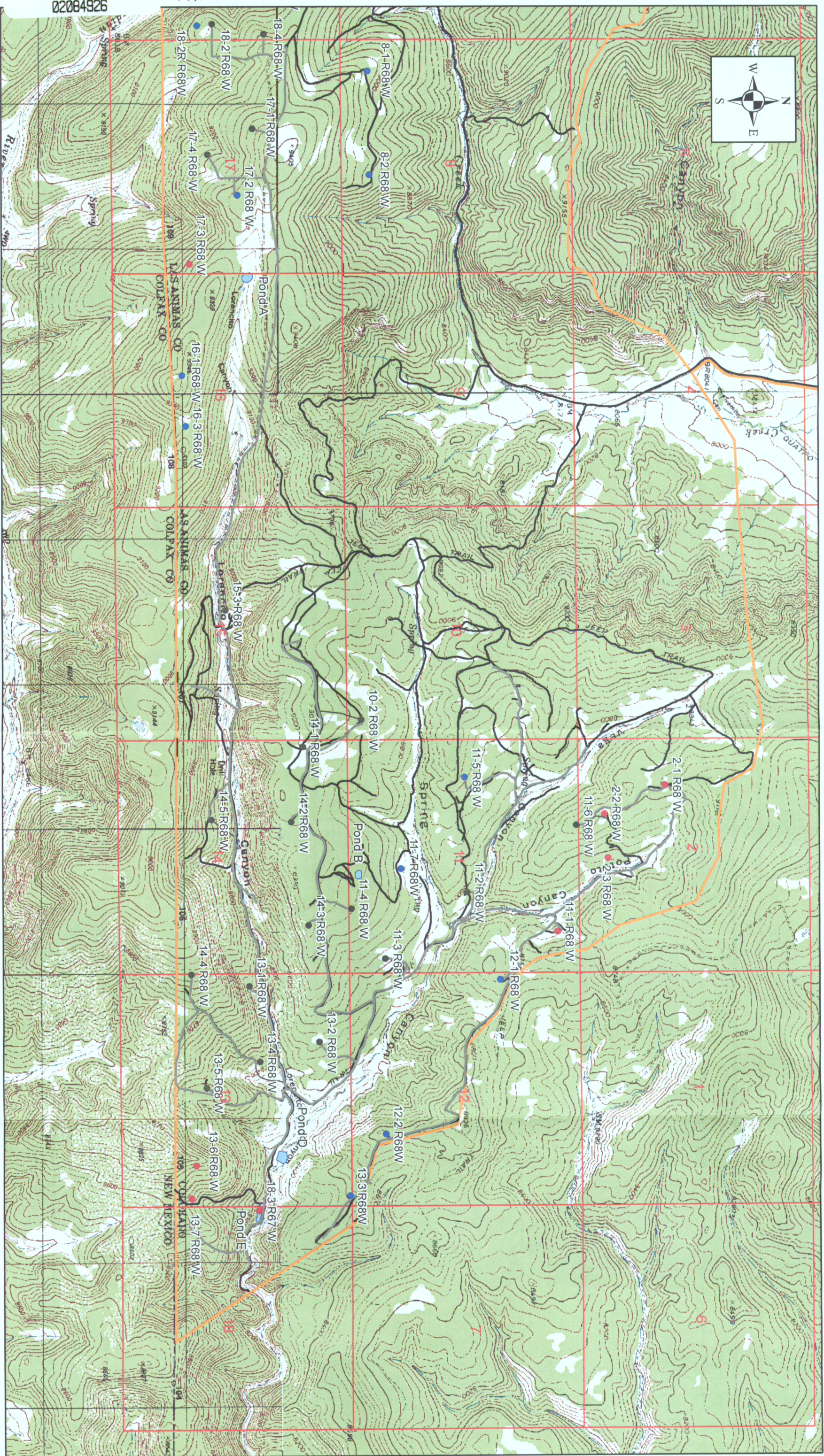


02084926

Fac# 292832

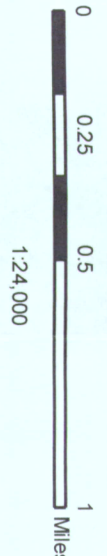


Legend

- Phase I
- Phase II
- Phase III
- Compressor Station
- Production Pond
- Pipelines
- Roads
- Lease Boundary
- Section Boundary
- Township Boundary

Red River Ranch Ponds

Las Animas County, Colorado



Moore Capital
Management LLC

EDAW | AECOM

[illegible]

DRAWING TITLE:
GRADING PLAN
WETLAND D

LG105

© EDAW INC. ALL RIGHTS RESERVED



SCALE: 1" = 20' - 0"

A diagram showing a step function on a coordinate system. The horizontal axis is labeled with 0', 10', 20', and 40'. The vertical axis has four steps of height 10 units each. A white arrow points to the right, indicating the direction of increasing x.

Tercio Ranch
Constructed
Wetlands

Moore Capital
Management LLC

240 EAST MOUNTAIN AVENUE
FORT COLLINS, COLORADO
80524
TEL 970 484 6073
FAX 970 484 8518
www.edaw.com

REV.	COMMENT	DATE
-	-	-

SEAL.

DRAWING TITLE:
GRADING PLAN
WETLAND B

SHEET NO.
LG103

DATE: 28 APRIL 2006
JOB NO.: 06030025.01
DRAWN BY: MP
CHECKED BY: CS



GRADING PLAN - WETLAND B

SCALE: 1"=30'-0"

Tercio Ranch
Constructed
Wetlands

Moore Capital
Management LLC

240 EAST MOUNTAIN AVENUE
FORT COLLINS, COLORADO
80524
TEL 970 484 8073
FAX 970 484 8518
www.edaw.com

EDAW | AECOM

REV.	COMMENT	DATE
-	-	-

SEAL.

DATE, 28 APRIL 2006
JOB NO., 06030025.01
DRAWN BY, MP
CHECKED BY, CS

DRAWING TITLE:
GRADING PLAN
WETLAND A

SHEET NO.,
LG101
© EDRAW INC. ALL RIGHTS RESERVED



GRADING PLAN - WETLAND A

SCALE: 1"=40'-0"

Tercio Ranch
Constructed
Wetlands

Moore Capital
Management LLC

240 EAST MOUNTAIN AVENUE
FORT COLLINS, COLORADO
80524
TEL 970 484 8073
FAX 970 484 8518
www.edaw.com

EDAW | AECOM

REV.	COMMENT	DATE
-	-	-

SEAL.

DATE: 28 APRIL 2006
JOB NO.: 06030025.01
DRAWN BY: MP
CHECKED BY: CS

DRAWING TITLE:
GRADING PLAN
WETLAND E

SHEET NO.:
LG107
© EDRAW INC. ALL RIGHTS RESERVED



GRADING PLAN - WETLAND E

SCALE: 1"=20'-0"

